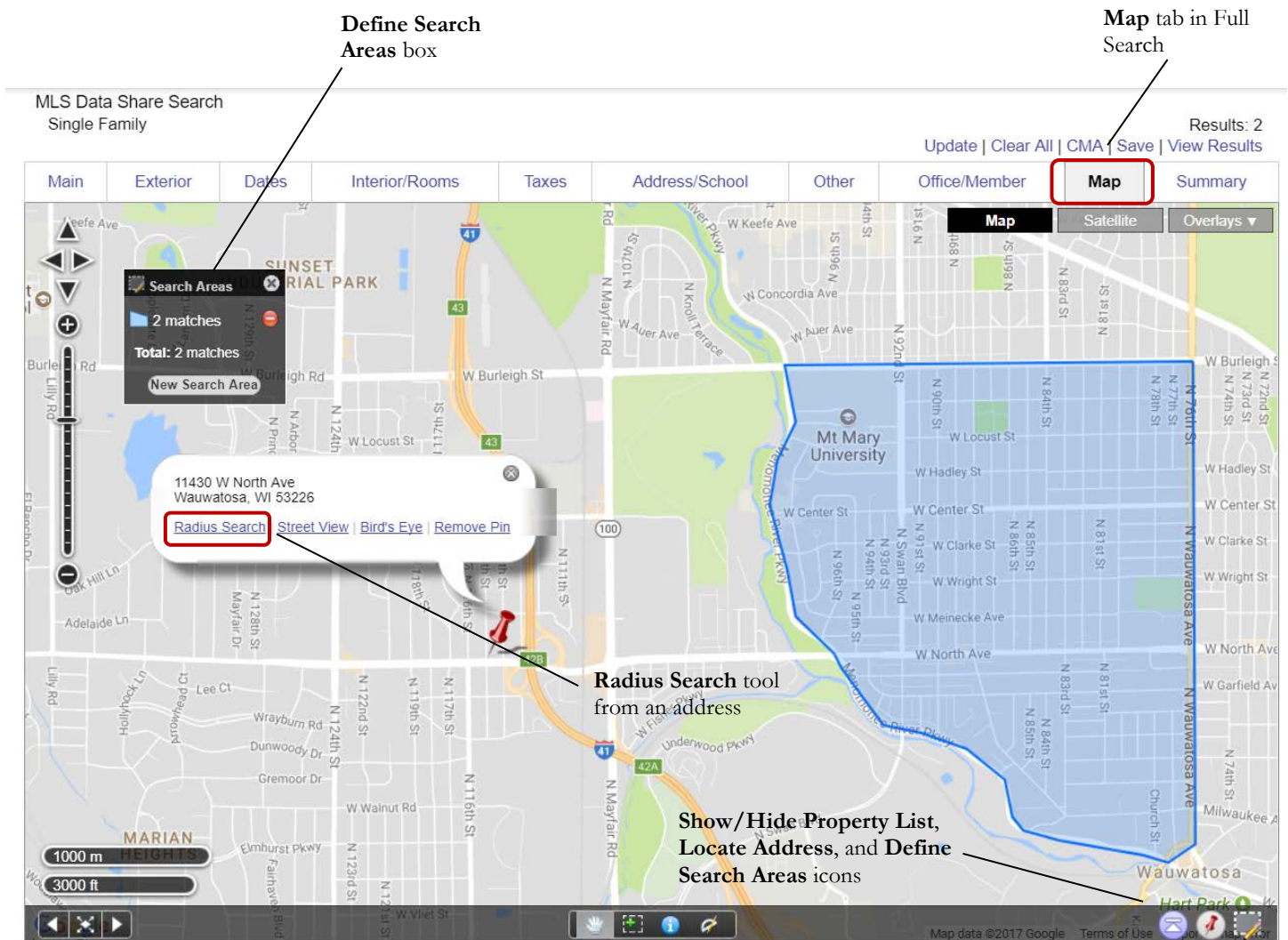


## FlexMLS Maps Quick Reference Guide

### *Full Search Map Tab Features*



This map is the result of clicking on the Map tab in the Full Search screen. It includes the same functionality described in the FlexMLS Map previous to this section with additional features, as described following.

The **Search Areas** box allows you to define areas of the map in which you would like to search for listings. From the Map tab screen, click the white **New Search Area** button located in the black Search Areas box to begin your search. The Search Areas box will expand to present several search options (as shown above). You may also search using the visible map by clicking the **Use Visible Map** button; this will search your default map area. Or you may use your mouse to create rectangles, circles, or irregular polygons to limit your search, by selecting one of the three shapes available.

**To create a rectangular search area**, click on the rectangle in your Search Areas box, then click on the map to define one corner of your rectangle. Move your mouse until the rectangle is the desired size, and click again to complete the shape.

**To create a circular search area**, click on the circle in your Search Areas box, then click on the map to set the center of your search. Move your mouse to increase the radius of the search from that center point, click again to complete the circle.

**To create an irregular-shaped search area**, click on the polygon in your Search Areas box, and then click on the map to define the first corner of your polygon. Click to define the remaining search boundaries. Your polygon can have as many points as you need to define your search area. Double-click to complete your polygon.

The **Radius Search** tool allows you to search in a radius distance specified by you, of an address you locate on the map. You activate the Radius Search by entering address in the Address field, and then clicking the Find button. Once the location is plotted on the map with the red pin, the Info Bubble will appear with the option to perform a Radius Search. By clicking Radius Search, you will be prompted with a pop-up box asking you how many miles from this point would you like to search. You may enter whole numbers, or numbers in decimal increments (i.e., one half mile = .5, one twentieth of a mile = .2). A mile is considered approximately 12 blocks.

### *Search Results Screen Map Features*

The screenshot displays a real estate search interface. On the left, a list of search results is shown, each with a thumbnail image, price, address, status, and MLS number. The first result is for \$269,000 at 835 N 75TH ST, Wauwatosa, WI 53213-3135, with status 'Active' and MLS # 1544891. The second result is for \$255,000 at 2033 N 119th ST, Wauwatosa, WI 53226-2011, with status 'Active' and MLS # 1546686, marked as 'Price Reduced'. The third result is for \$549,900 at 6527 Washington Cir, Wauwatosa, WI 53213-2459, with status 'Active' and MLS # 1547408. The fourth result is for \$204,900 at 4542 N 101st St, Wauwatosa, WI 53225-4613, with status 'Active' and MLS # 1541216. The fifth result is for \$225,000 at 10410 W Melvina St, Wauwatosa, WI 53222-2331, with status 'Active' and MLS # 1552254, marked as a 'New Listing'.

On the right, a map view shows the search area with various colored pins indicating property status: green for 'Active', yellow for 'Pending', and blue for 'Closed'. A 'Color Legend' pop-up is visible, showing these color-coded status options. The map includes navigation controls, a scale bar (4 km / 3 mi), and a 'Show/Hide Color Legend' button. The interface also features a top navigation bar with options like 'Save', 'E-Mail', 'Print', 'CMA', 'Export', and 'ShowingCart', and a bottom navigation bar with 'Edit Search', 'List', 'Detail', 'Photos', 'Map', 'Compare', and 'Messages'.

This map is the result of clicking the **View Results** button from the Full Search, or the **View Results** link from the Map tab in Full Search. It includes similar functionality described in both of the previous map sections with additional features, as described following.

**Color Legend** is a reference tool which will color code the listings according to status, price range, MLS, and price by square foot. In the example screen shot above, the Color Legend is showing the listings by status.

**Show/Hide Color Legend** will show or hide the Color Legend tool.






The following map shows the listings color coded by MLS (listing member membership).

Search Results *work on behalf of a contact* Save E-Mail Print CMA Export ShowingCart

1

Results: 458 Selected: 0

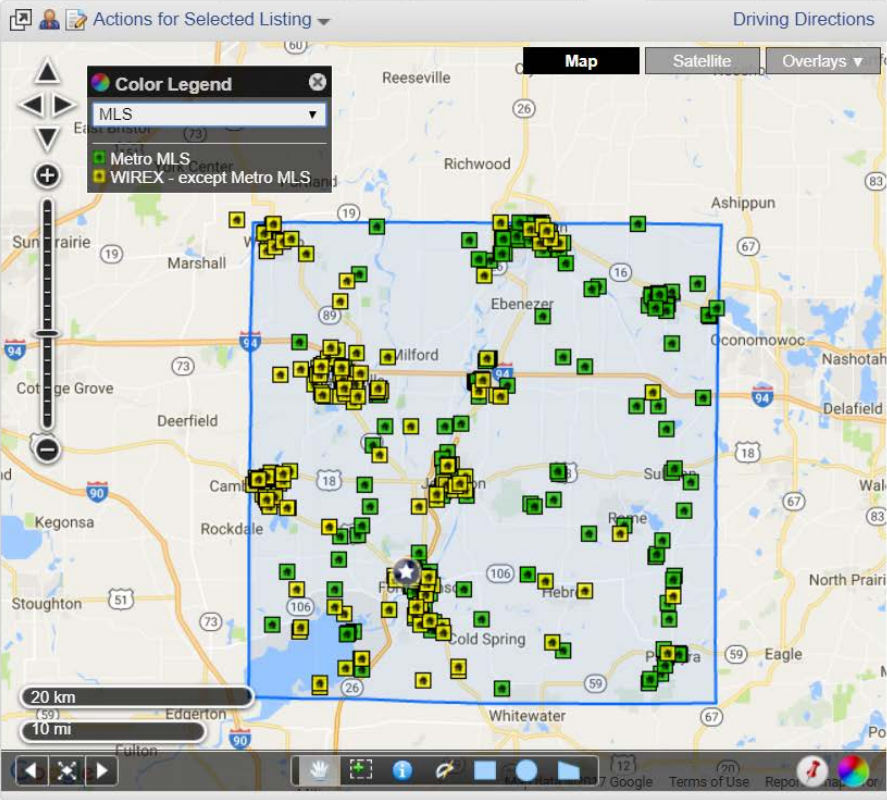
Price | Status | MLS #

	<b>\$214,900</b> 837 McCoy Park Rd Fort Atkinson, WI 53538-1065 Active / 1533614
	<b>\$118,900</b> 325 W Prospect St Lake Mills, WI 53551-1150 Active / 1540266
	<b>\$124,900</b> 711 W Cady St Watertown, WI 53094-7614 Active / 1551408 <span style="color: orange;">C</span> Status Change
	<b>\$325,000</b> N653 Old 26 Rd Koshkonong, WI 53538-8770 Active / 1544737
	<b>\$499,000</b> 323 Merchants Ave Fort Atkinson, WI 53538-2247 Active / 1506844

Color Legend

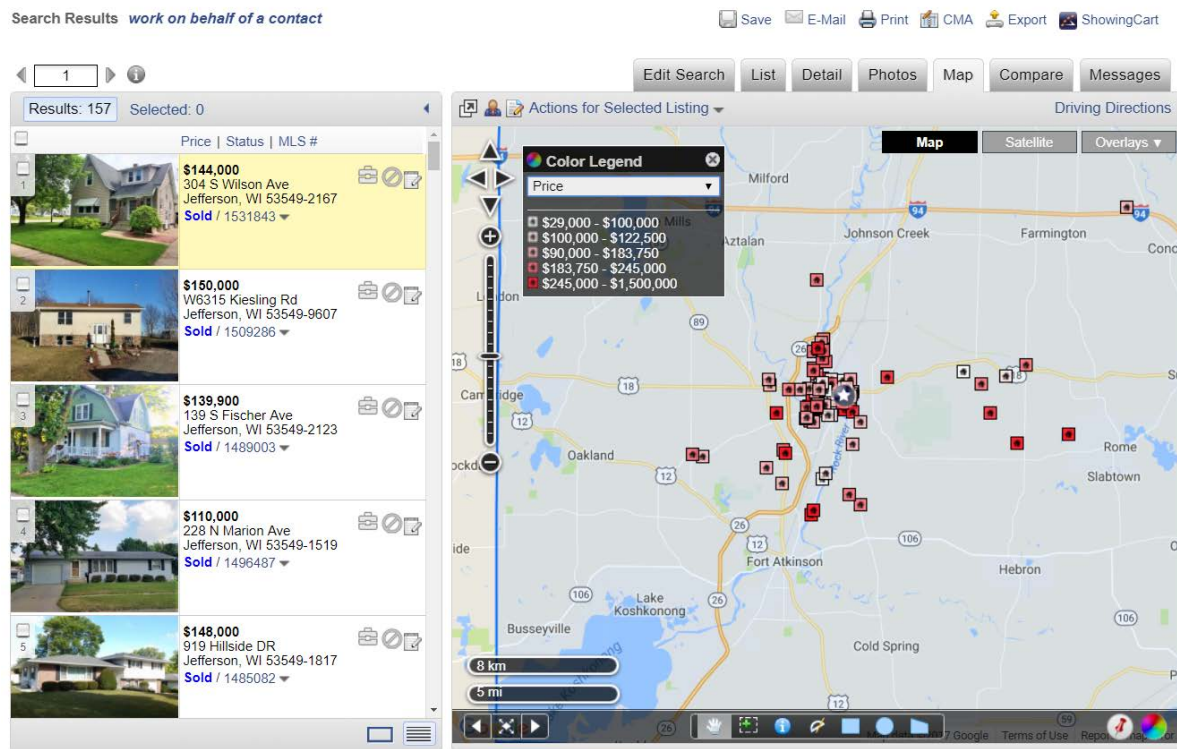
MLS

- Metro MLS
- WIREX - except Metro MLS



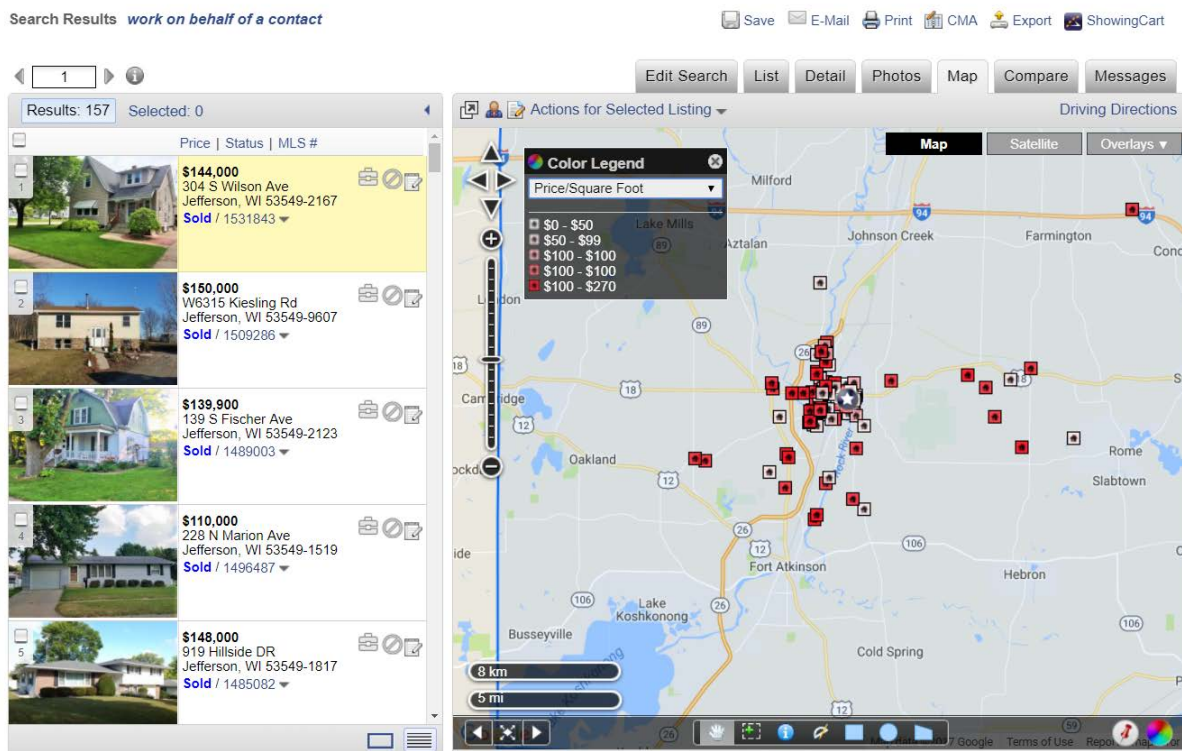


The following map shows the listings color coded by price range.



The following map shows the listings color coded by price per square foot.

**Note:** If there are listings whose color match the \$0 to \$1 range, they have estimated square footage, Not Verified, or Not Available entered (these will be listings entered previous to February 12<sup>th</sup> 2013).



The Listing icons are the colored house icons shown on the map. Clicking on any one of them will display the Info bubble of the icon (shown in the example following). From here you can perform a radius search, view and access previous listing history, access the tax record, or zoom in on the location of the listing.

Search Results *work on behalf of a contact*

Save E-Mail Print CMA Export ShowingCart

Results: 172 Selected: 0

	Price	Status	MLS #
	\$159,900	Active	4342 Glenway St Wauwatosa, WI 53222-1119 1550036
	\$259,900	Active	613 Pleasant View St Wauwatosa, WI 53226-4664 1536819
	\$284,900	Active	2508 N 71st St Wauwatosa, WI 53213-1347 1547436
	\$439,900	Active	6910 W Wisconsin Ave Wauwatosa, WI 53213-3818 1551071
	\$464,900	Active	407 Glenview Ave Wauwatosa, WI 53213-3327 1543279

Actions for Selected Listing

Driving Directions

Map

Satellite

Overlays

2339 N 115th ST  
Wauwatosa, WI 53226-1101  
Tax Key Number: 336029500  
[More Info](#) [Move Listing](#)

Listing Activity:

1535282	06/15/2017	Active	\$ 255,900	<a href="#">Select</a>
839707	07/21/2006	Sold	\$ 215,000	<a href="#">Select</a>
819039	06/07/2006	Expired	\$ 235,900	<a href="#">Select</a>
790085	03/17/2006	Expired	\$ 259,900	<a href="#">Select</a>

Within Locations:

Milwaukee [edit](#)

[Radius Search](#) [Street View](#) [Bird's Eye](#) [Zoom Here](#)

500 m

2000 ft

Google

Terms of Use

Report

Help

## Edit Search > Map Search Tab Features

This map is the result of clicking the **Edit Search** tab > **Map Search** link from the Search Results screen. It includes similar functionality as described in all of the previous map sections with additional features, as described following.

To access this screen, click **Edit Search**, and then **Map Search**

Search Results *work on behalf of a contact*

◀ 1 ▶ ⓘ

View Results: 45

Location, address or MLS # [Browse »](#)

County *of*

- ✕ Milwaukee

Municipality *of*

- ✕ Wauwatosa

Shape *within*

- ✕ Polygon

Property Type *of* Single Family

☒ Status *of* Active, Pending, Sold

Delayed

Active

Pending

Off Market Dates

☐ Pending Date  to

☒ Sold Date  to

☐ Expiration Date  to

[Hide Date Ranges](#)

☒ Bedrooms *between* 3 and 4

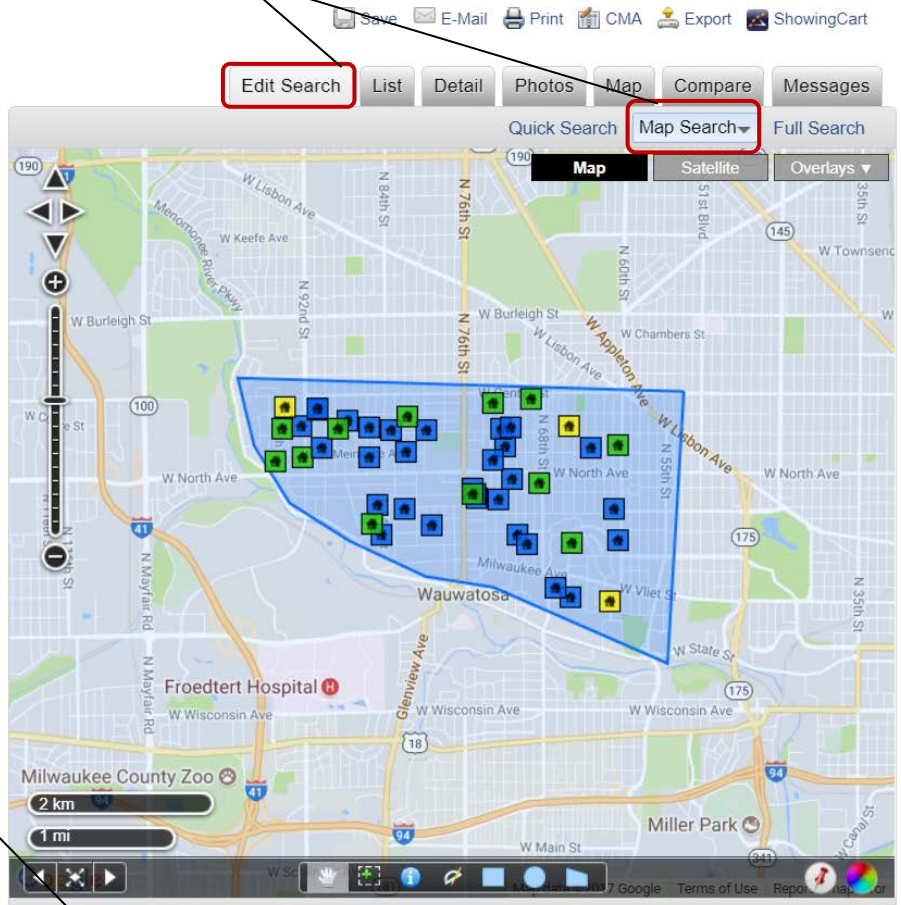
☒ Total Bathrooms *between* 1.5 and 2.5

☒ Garage Spaces *between* 2.5+

+ Add a field to the search

Additional Search Options

View Results: 45 [Clear](#)



This is where your defined areas will be listed; to delete, click the **X**.

You may edit a search including your currently selected parameters by defining one or more specified areas on the map. You may define your desired area(s) using the shape tools, a radius search from one of the listing icons, or a specified address added to the map. These areas can be saved to a search.

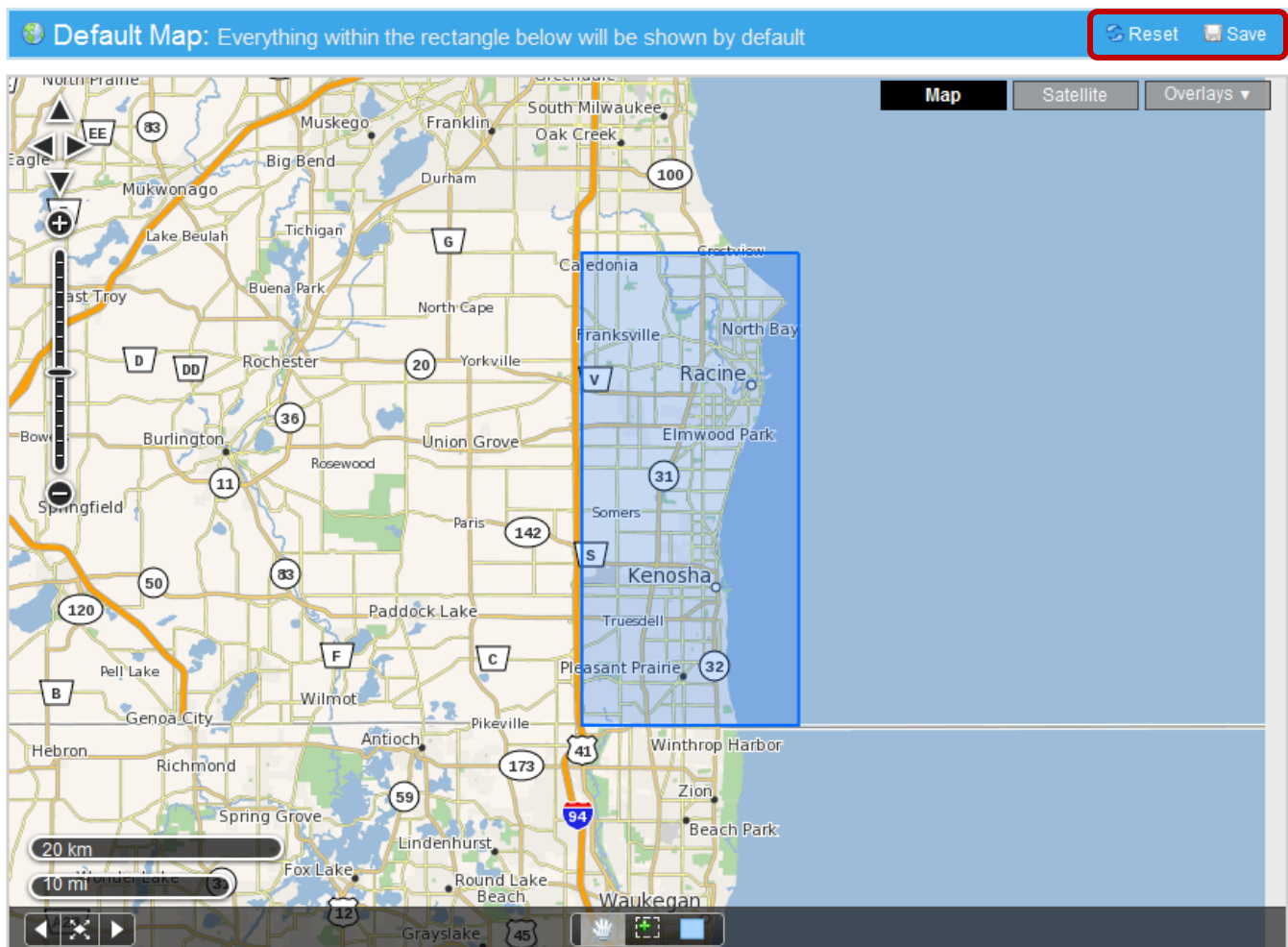


## Default Map

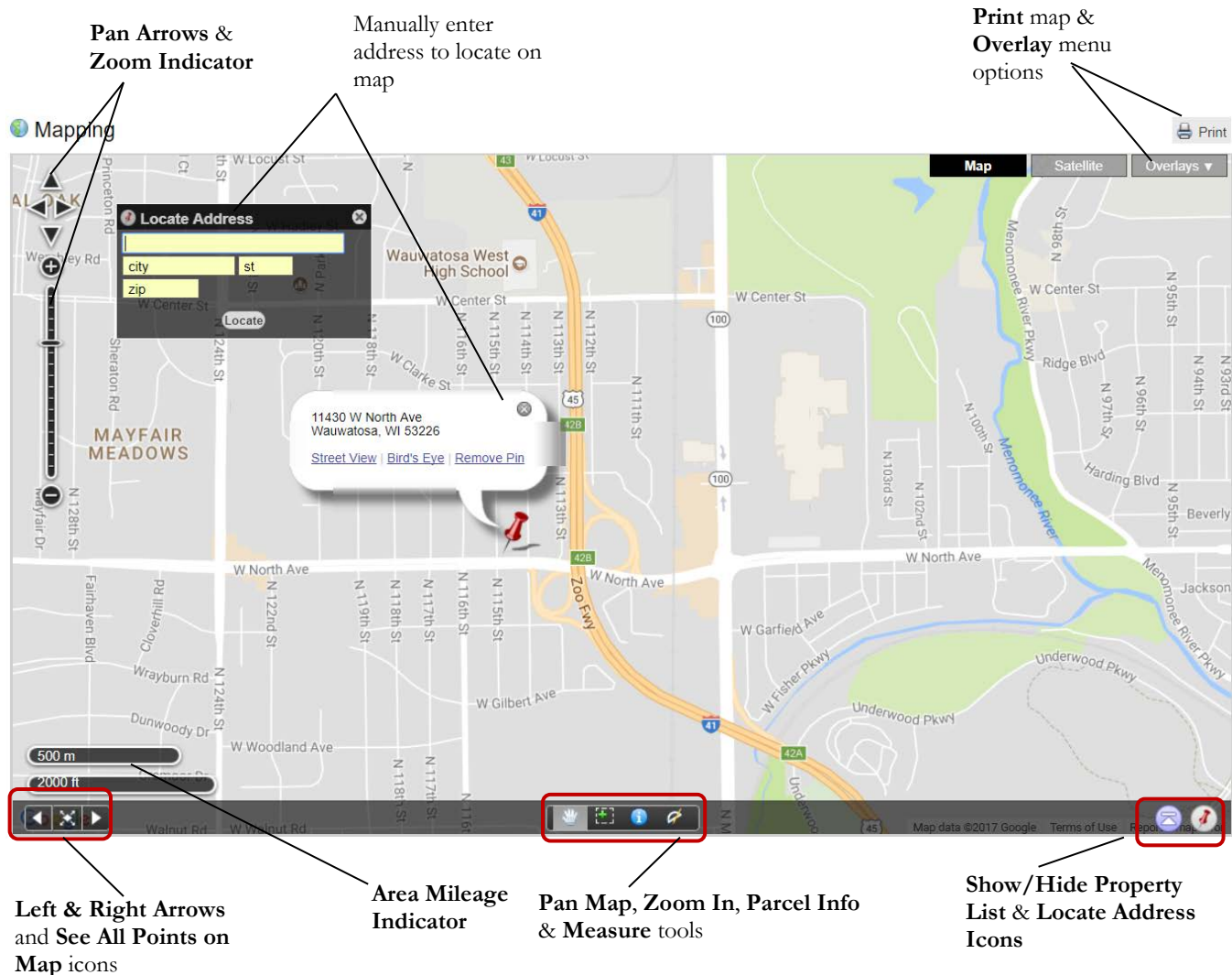
The Default Map preference lets you set a custom map area that will be used as starting point for all searches that use the map. The Default Map is also the map that is first displayed when you use the FlexMLS Maps under Maps/Financial in the main menu tree.

To set your desired default map area, use the navigation tools at the left side of the map to adjust the map to the zoom level and location that you would like to use as your default; single left-click to select the rectangle tool at the bottom of the screen. When the rectangle tool is selected, single left-click (do not hold your mouse button down) an intersecting point of your desired area to define a corner for your rectangle (for example, the northwest intersecting points). Move the mouse (without holding the mouse button down) to highlight the area you'd like to use as your default, and double left-click to complete your rectangle.

If you make a mistake, you can click on the rectangle tool to draw a new rectangle, or click on the **Reset** button at the upper right to set the map back to the MLS default. When you are satisfied with the highlighted map area, click the **Save** button to save your map preference.



## Flexmils Map Features



This map is the result of clicking on the flexmils maps in Maps/Financial in the FlexMLS menu.

- The **Pan Arrows** allow you to move the map in the directions of north, south, east, and west.
- The **Zoom Indicator** allows you to maintain the current map center but adjust the magnification, use the Zoom Bar in the upper left corner of the mapping screen. Click the + or – buttons to move the zoom level up or down.
- The **Area Mileage Indicator** is a scale showing you what distance each bar is covering from tip to tip.
- The **Left and Right Arrows** allow you to move back and forth through previously viewed screens.
- The **See All Point on Map** returns you to the original map coming into the Map tab.
- The **Pan Map** icon allows you to reposition map.
- The **Zoom In** icon lets you zoom down to a specific area by single clicking your left.
- The **Measure** tool gives you the distance between points on the map.
- The **Show/Hide Property List** icon will show or hide the property list when viewing listings on the map. To use, click the arrow button in the lower right corner of the map. When the arrow is pointing up, the list is hidden and clicking will display the list. When the arrow is pointing down, the list is displayed, and clicking it will hide the list. You may remove listings from the list by clicking the red 'X' next to the address. This icon will only show if you have more than one address loaded into the map.



- The **Locate Address** pin will show or hide the black Locate Address entry box.
- The **Print** icon will print the current map.
- **Satellite** – This option button allows you to view the map in its satellite version.
- **Overlays** – This option button allows you to view the map using the following tools:
  - **Zip Codes** – This allows you to view your map area bordered by zip code areas. This feature is best viewed in the non-satellite map.
  - **Acres** - Allows you to view the acreage for a parcel lot within FlexMLS on any of the maps, if available.
  - **Counties** – This allows you to view your map area bordered by counties.
  - **Imagery Parcels** – Using the Satellite map, this option allows you view lot lines of the properties.
  - **Communities Maponics** – This allows you to view your map area bordered by popular community areas.
  - **Neighborhood Maponics** – This allows you to view your map area bordered by municipality- defined neighborhood areas, listed on the tax record.
  - **Subdivisions Maponics** – This allows you to view your map area bordered by municipality- defined subdivisions, listed on the tax record.